



GAT MONTHLY MEMBERSHIP PROGRESS REPORT

Results as of: 6/30/2023

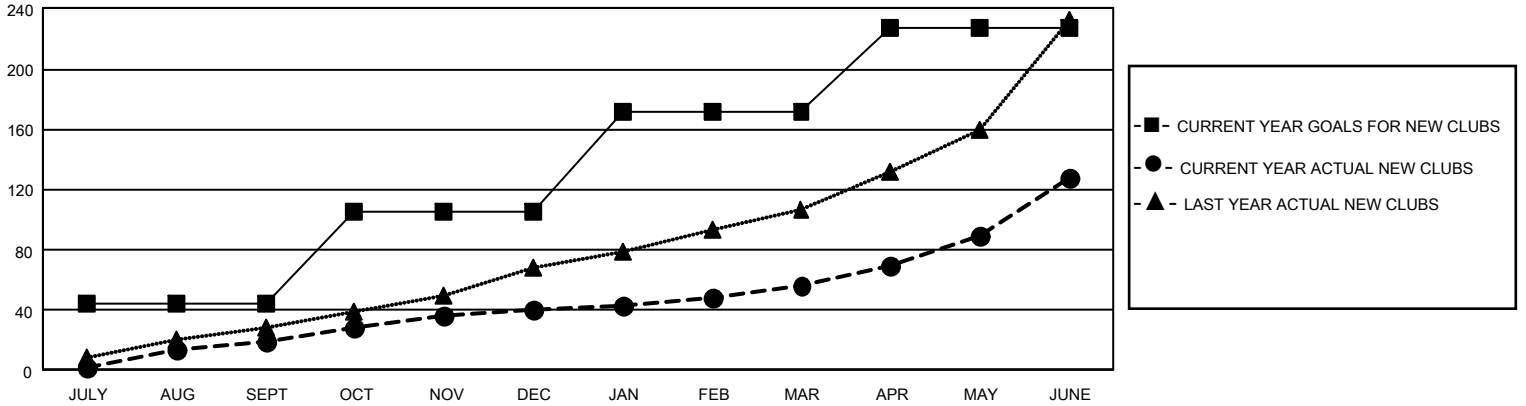
GAT Constitutional Area 3

REPORT DOES NOT INCLUDE CLUBS IN UNDISTRICTED AREAS.

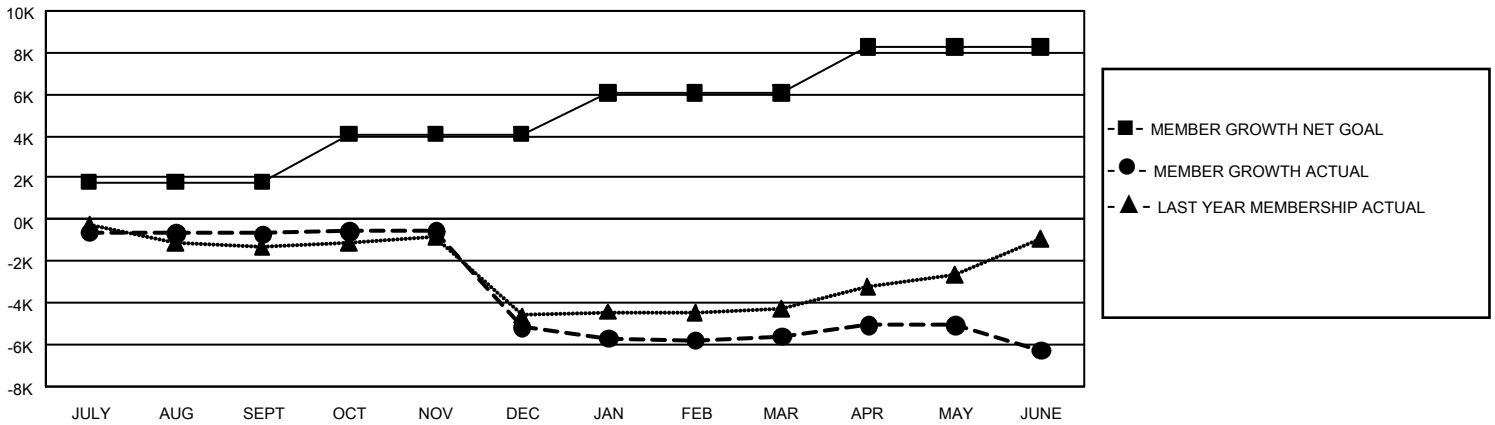
Clubs			
RESULTS FOR 2022-2023			
QUARTER	NEW CLUB GOAL	NEW CLUBS	DROPPED CLUBS
JULY/AUG/SEPT	132	19	35
OCT/NOV/DEC	183	21	102
JAN/FEB/MAR	198	16	51
APR/MAY/JUNE	168	72	83

Members			
RESULTS FOR 2022-2023			
QUARTER	MEMBER GROWTH NET GOAL	MEMBER GROWTH ACTUAL	DROPPED MEMBERS ACTUAL (including transfers)
JULY/AUG/SEPT	1799	3,038	3,373
OCT/NOV/DEC	2298	2,983	7,181
JAN/FEB/MAR	1964	2,529	2,580
APR/MAY/JUNE	2200	6,839	7,018

GOALS AND ACTUAL NEW CLUBS CUMULATIVE



GOALS AND ACTUAL MEMBERS CUMULATIVE



DROPPED CLUBS: 270	
DROPPED MEMBERS	
DECEASED	877
CLUB CANCELLED	3,608
OTHER	15,666
TOTAL	20,151

2,564 CLUBS OF 4,442 ADDED 1 OR MORE NEW MEMBERS

[CLICK HERE FOR CUMULATIVE MEMBERSHIP DATA](#)

GENDER DISTRIBUTION	
MALE	48,057 (47.26%)
FEMALE	53,586 (52.70%)
NON BINARY	2 (0.00%)
PREFER NOT TO ANSWER	40 (0.04%)
TOTAL FAMILY UNIT MEMBERS	38,690
FAMILY MEMBERS PAYING HALF DUES	21,556